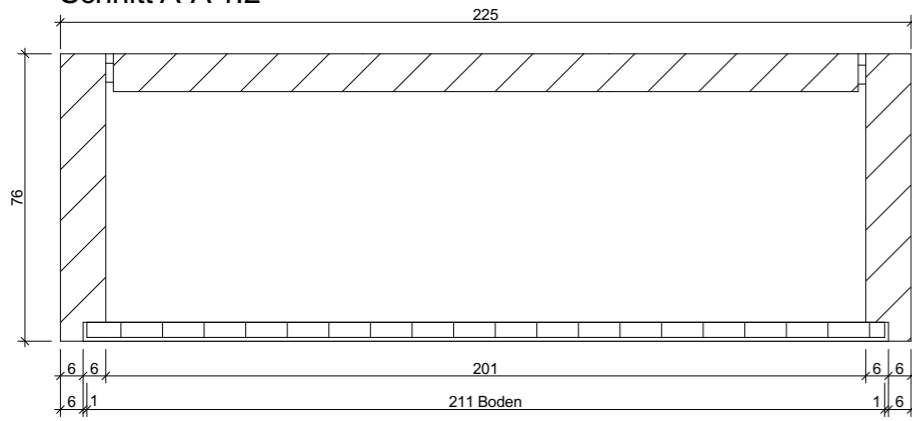
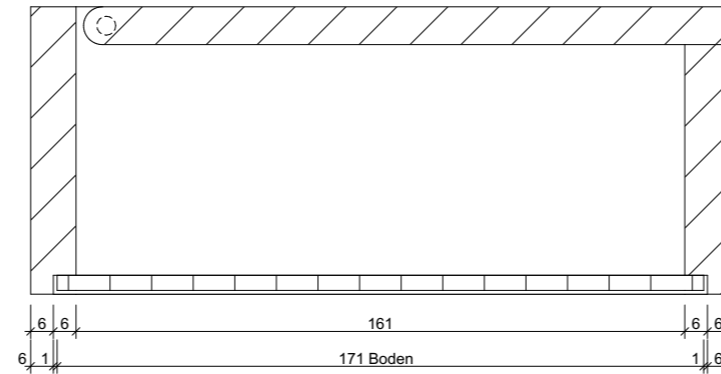


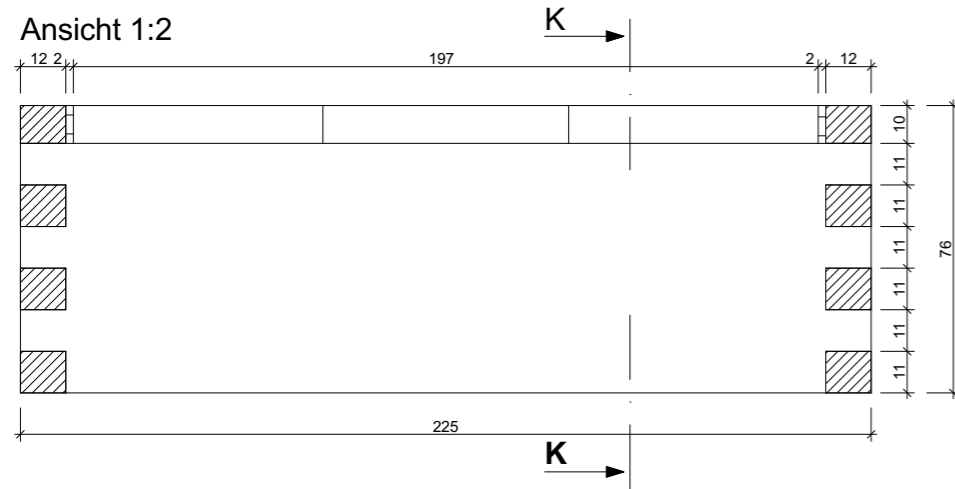
Schnitt A-A 1:2



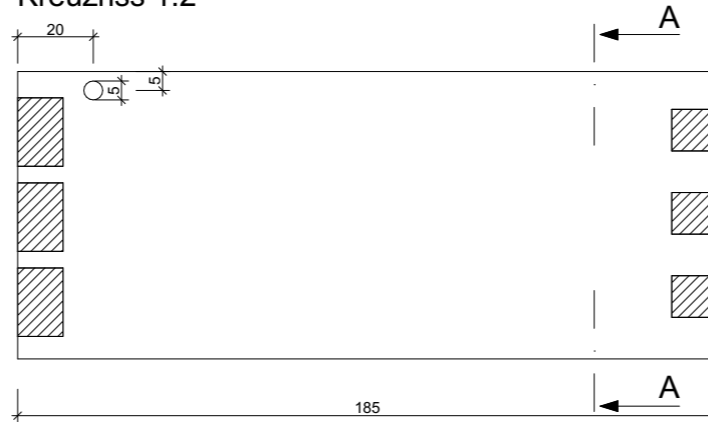
Schnitt K-K 1:2



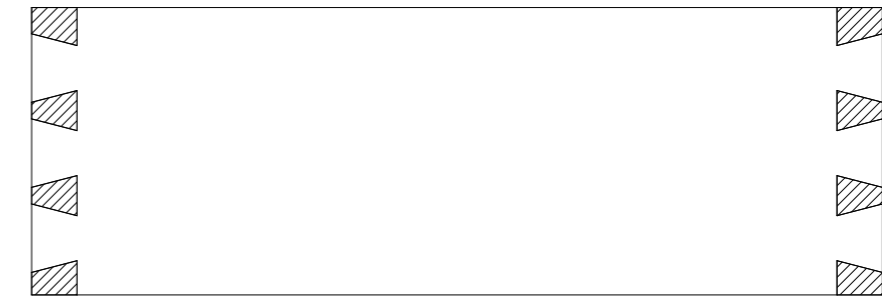
Ansicht 1:2



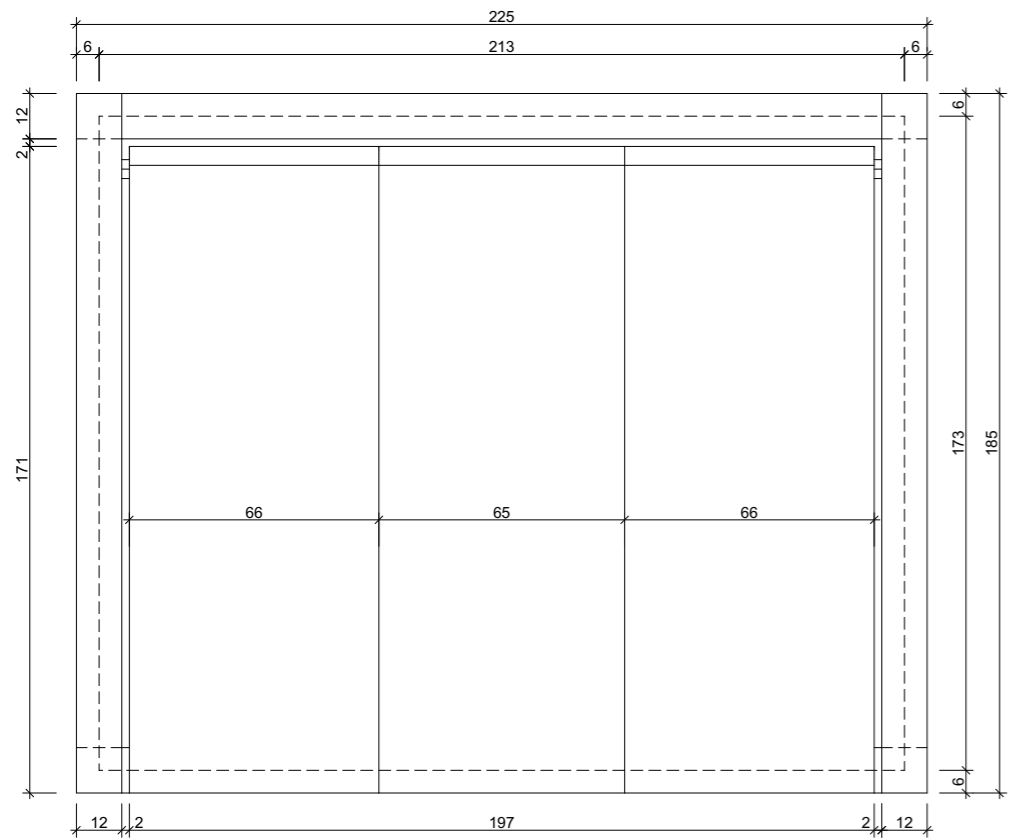
Kreuzriss 1:2



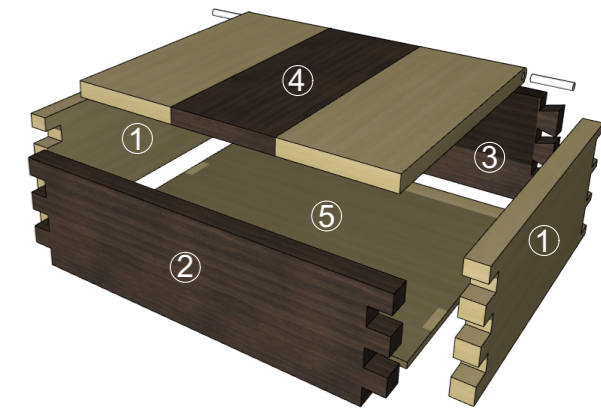
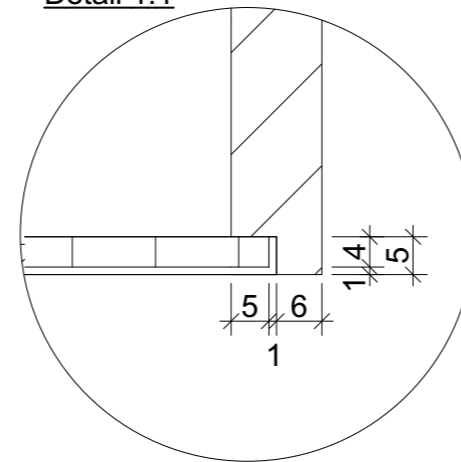
Hinteransicht 1:2



Grundriss 1:2



Detail 1:1



Bundeswettbewerb 2023

Werkstoffliste

| PosNr | Bezeichnung | Werkstoff | Stk. | Dicke | Breite | Länge |
|-------|-------------|-----------|------|-------|--------|-------|
| 1 | Seitenteil | AH | 2 | 12 | 76 | 185 |
| 2 | Vorderteil | NU | 1 | 12 | 66 | 225 |
| 3 | Rückwand | NU | 1 | 12 | 76 | 225 |
| 4 | Deckel | NU/AH | 1 | 10 | 197 | 171 |
| 5 | Boden | FU | 1 | 4 | 171 | 211 |